

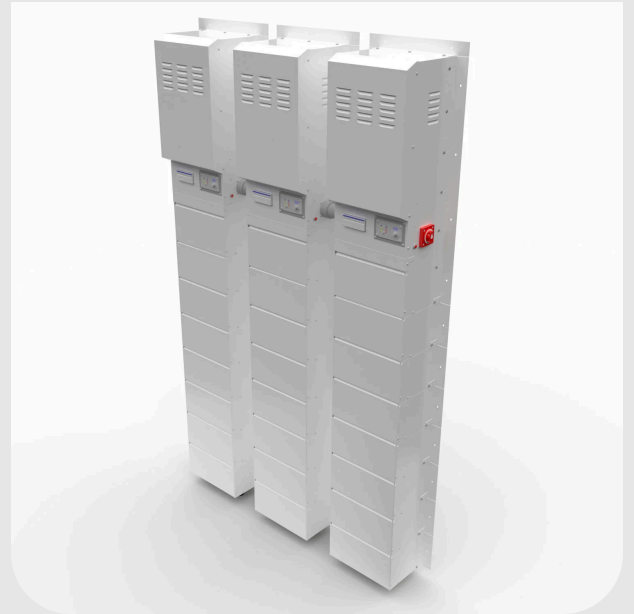
General Product Information

Product Series: Silent Sentry (Wall Mounted)
Output: 15000 Watts / 15.0 kW
Battery Capacity: 28.8 kWh

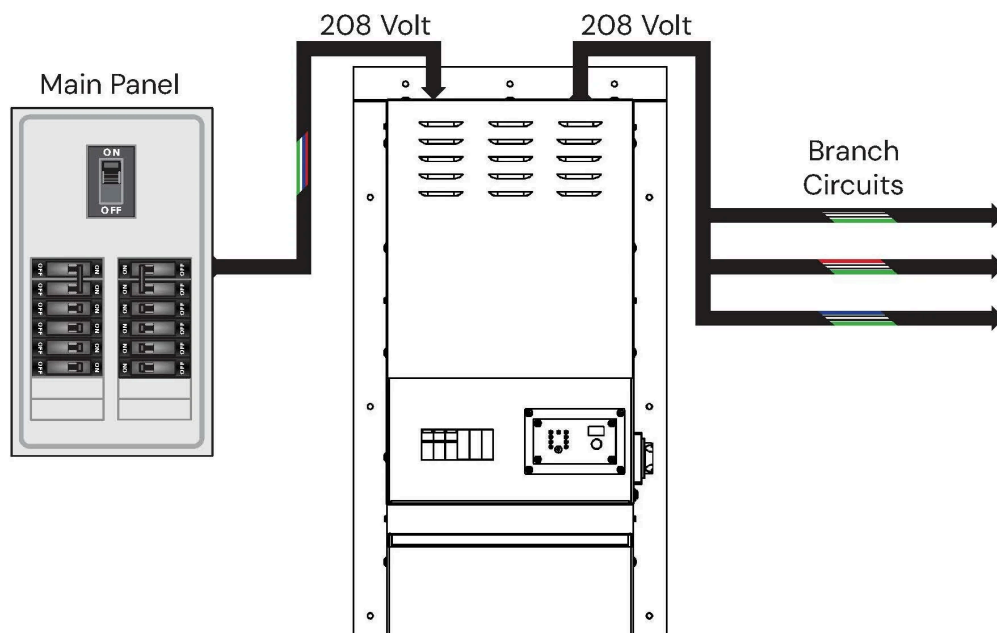
Product Overview

Our SSH150240V-3PH UPS system delivers 15000 watts of Three-phase power with a 28.8 KWH battery bank, ready to activate instantly during an outage.

This hardwired system is ideal for both new construction and remodels, and can be installed anywhere within your facility. It's designed to power appliances across multiple rooms by serving output branch circuits, all while occupying minimal to no floor space.



Wiring Diagram



AC Electrical Specifications

General AC		Input Line Power		Output Load Power	
Wattage	15000	Voltage	208	Voltage	208
Phase Type	Three	Conductor Size	6 AWG	Conductor Size	6 AWG
Surge Wattage	30000	Amperage	60	Amperage	60
Frequency	60	Wire Configuration	Hot, Hot, Hot, Neutral, Ground	Wire Configuration	Hot, Hot, Hot, Neutral, Ground
Waveform	Pure	Connection Spec	Terminal Block	Outlets/Breakers	1
Transfer Time	20 ms			Connection Type	3 Pole Breaker
Bypass Switch	Not Included				

DC Electrical Specifications

Available Accessories

Battery Type	AGM Lead Acid	Power Outage Alert	Optional
Battery Capacity	28.8 kWh	Remote Battery Monitor	Yes
DC Voltage	48	Alarm Dry Contacts	Yes

Standards

Inverter	UL 1741
Battery	UL 94V-0

Enclosure/System Specifications

Cabinet Material	White Coated Steel	Tower Count	3	Height (in)	99
Inverter Cabinet Count	3	Weight	2262 lb	Width (in)	55
Battery Module Count	24	Heat Output	5118 BTU	Depth (in)	12

Dimensional Drawing

