

General Product Information

Product Series: Silent Sentry (Wall Mounted)

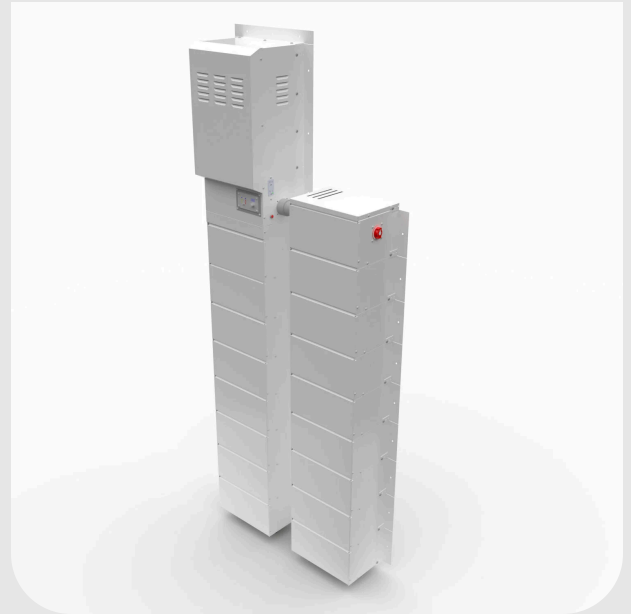
Output: 5000 Watts / 5.0 kW

Battery Capacity: 19.2 kWh

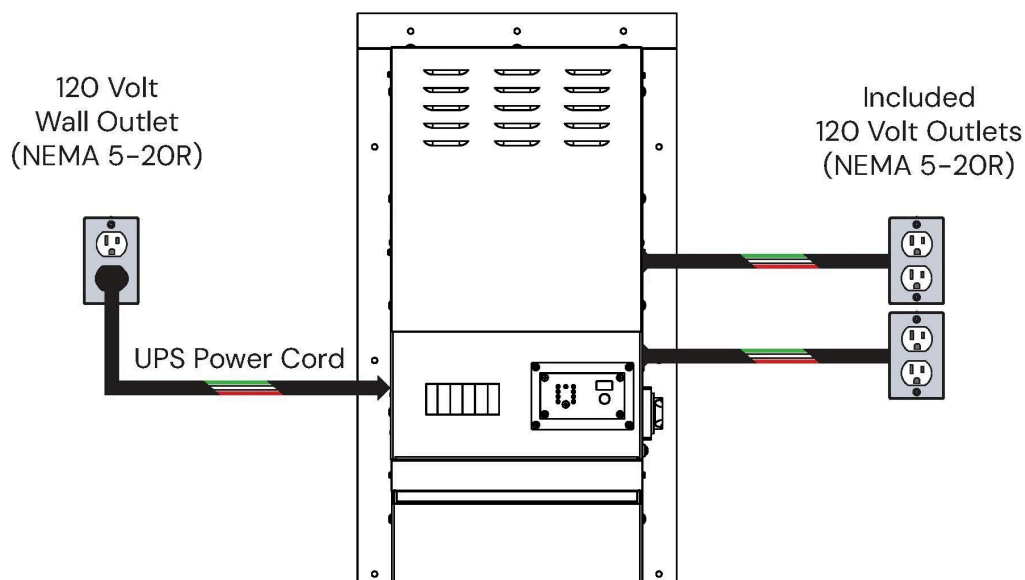
Product Overview

Our SSA50160V UPS system delivers 5000 watts of Single-phase power with a 19.2 KWH battery bank, ready to activate instantly during an outage.

This standalone system features a plug-and-play design that installs easily without permits or licensed contractors and requires little to no floor space.



Wiring Diagram



AC Electrical Specifications

General AC		Input Line Power		Output Load Power	
Wattage	5000	Voltage	120	Voltage	120
Phase Type	Single	Conductor Size	10 AWG	Conductor Size	12 AWG
Surge Wattage	10000	Amperage	30	Amperage	20
Frequency	60	Wire Configuration	Hot, Neutral, Ground	Wire Configuration	Hot, Neutral, Ground
Waveform	Pure	Connection Spec	10' Power Cord NEMA L6-30P	Outlets/Breakers	2
Transfer Time	20 ms			Connection Type	Duplex Receptacle NEMA 5-20R
Bypass Switch	Not Included				

DC Electrical Specifications

Battery Type	AGM Lead Acid	Power Outage Alert	Optional
Battery Capacity	19.2 kWh	Remote Battery Monitor	Yes
DC Voltage	48	Alarm Dry Contacts	Yes

Available Accessories

Standards

Inverter	UL 1741
Battery	UL 94V-0

Enclosure/System Specifications

Cabinet Material	White Coated Steel	Tower Count	2	Height (in)	99
Inverter Cabinet Count	1	Weight	1391 lb	Width (in)	34
Battery Module Count	16	Heat Output	1706 BTU	Depth (in)	12

Dimensional Drawing

